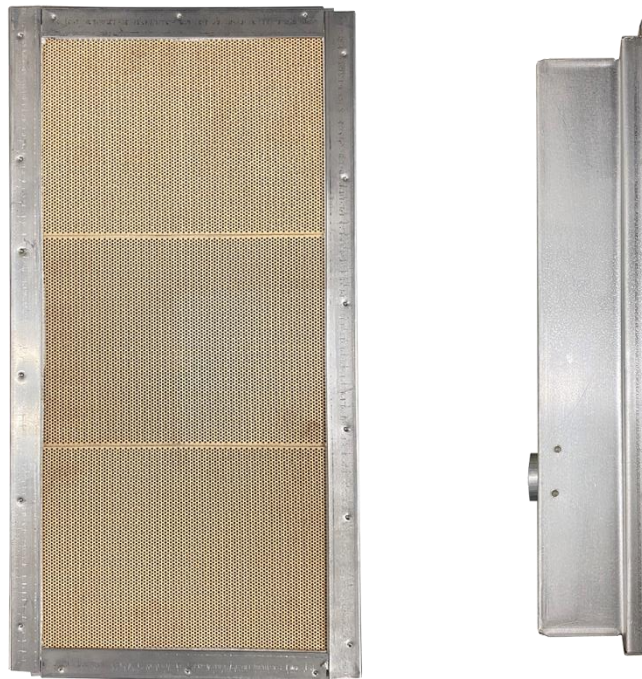


ENGINEERING SPECIFICATIONS FOR 17" CERAMIC GAS FIRED INFRARED BURNER



SERIES	INPUT	RADIANT SURFACE AREA	NET WEIGHT
BC17A-N BC17A-P	25,000 - 35,000 BTU/h	116 Sq. In.	6.5 lbs.

Normal Manifold Pressure

- Natural Gas- 6.0" W.C.
- Propane Gas- 10.0" W.C.

Minimum Inlet Pressure

- Natural Gas- 7.0" W.C.
- Propane Gas- 11.0" W.C.

Plenum Chamber

- Aluminized Steel

Inlet Pipe Size

- 1/8" NPT

Mounting Tab Slots

- .265" Diameter

Mounting Angle

- 0° - 180°

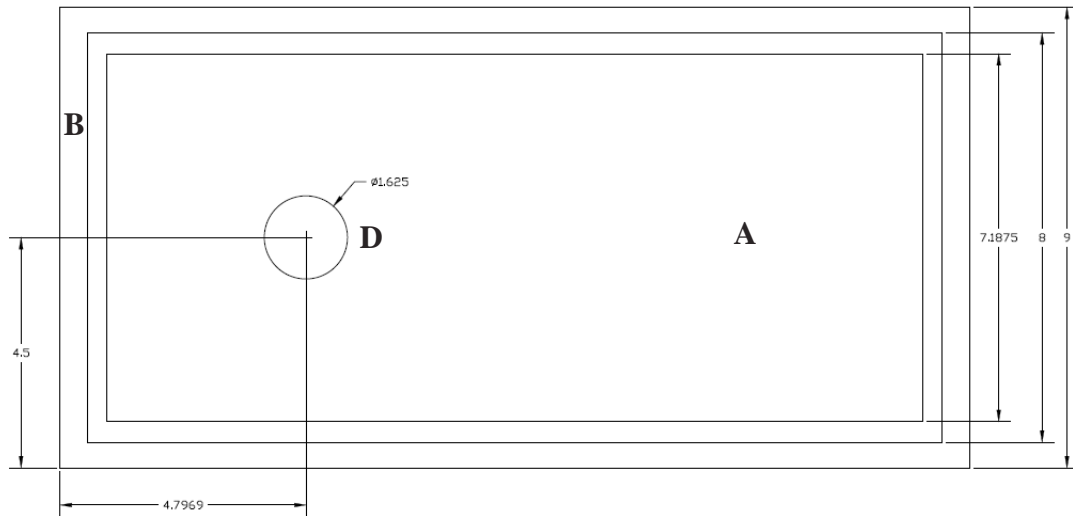
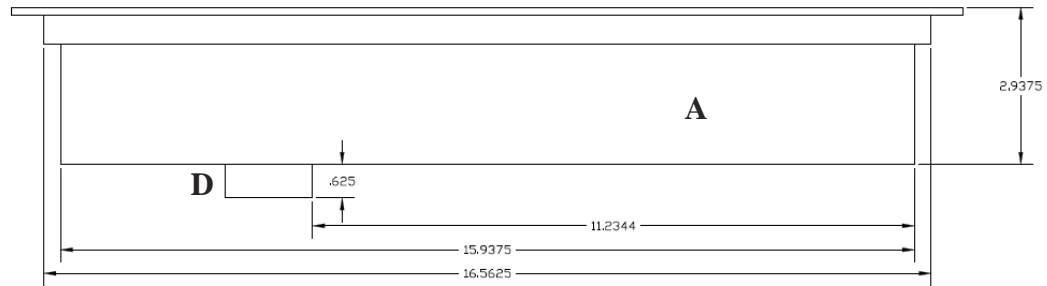
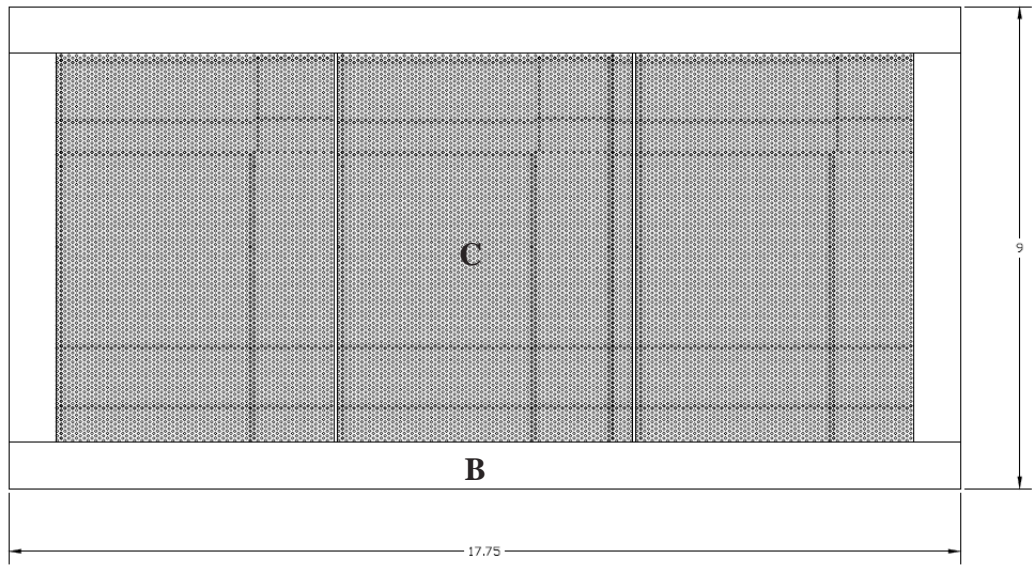
PROCESSBURNERS.COM

21400 Hoover Road • Warren, Michigan 48089

Phone: 586-756-0950 • Fax: 586-756-2626

sales@drp-co.com • www.processburners.com





DESCRIPTION

- A. Chamber (Aluminized Steel)
- B. Hold Down (304 #3 Stainless Finish)
- C. Ceramics
- D. Venturi