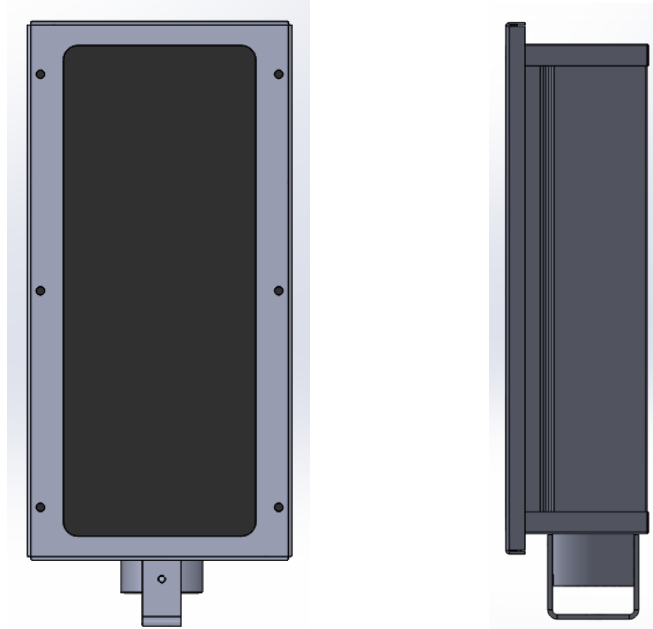


ENGINEERING SPECIFICATIONS FOR 14" ATMOSPHERIC GAS FIRED INFRA RED BURNER



SERIES	INPUT	RADIANT SURFACE AREA	NET WEIGHT
BC14A-N BM14A-N BF14A-N	14,000– 25,000 BTU/h	63.75 Sq. In.	Unique Per Configuration

Normal Manifold Pressure

- Natural Gas- 3.5 - 6.0" W.C.

Minimum Inlet Pressure

- Natural Gas- 5.0" W.C.

Available Emitter Surfaces

- Ceramic Tiles
- Metal Foam
- Metal Fiber

Options

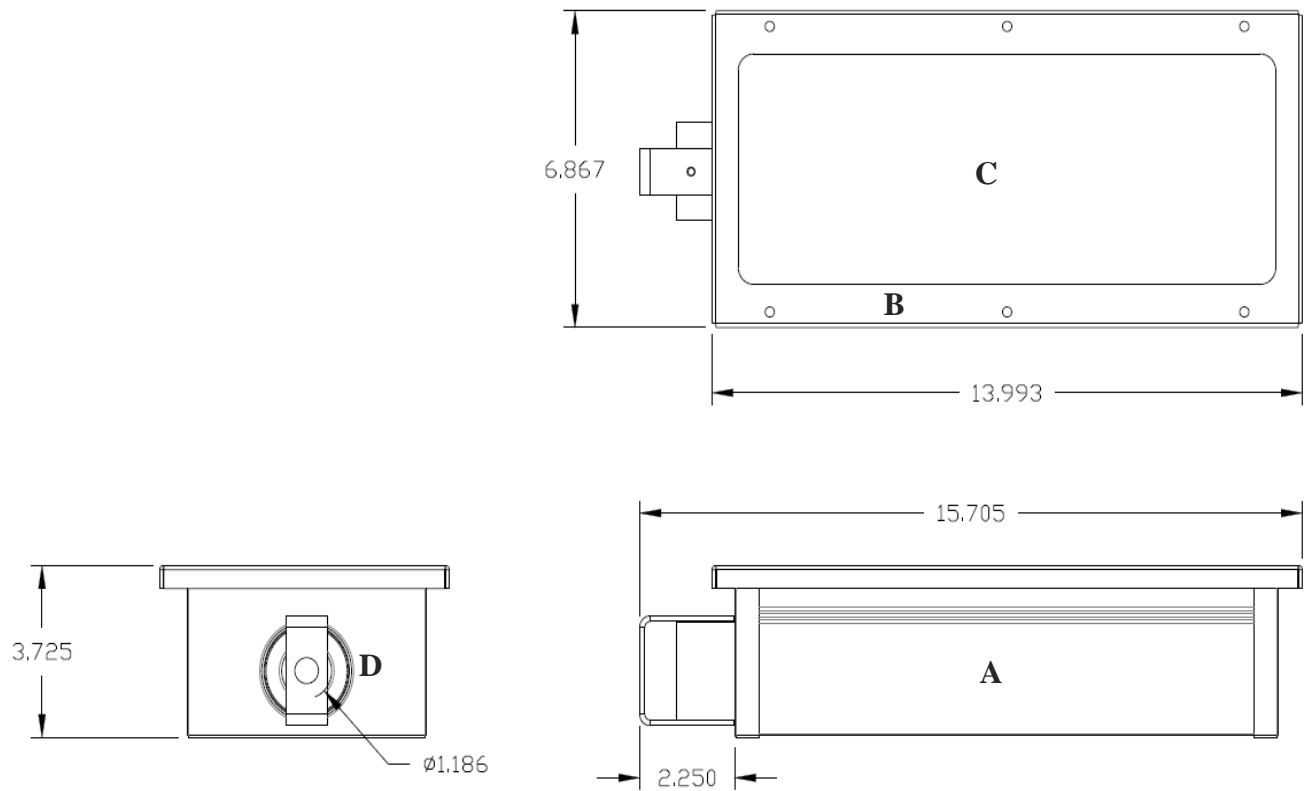
- Gas Orifice
- Gas Orifice Locator Bracket
- Brass Fittings
- Factory Pre-Burn
- Mounting Tabs
- Plenum offered in 304 Stainless Steel/430 Stainless Steel/Aluminized Steel

NOTE: Values and inputs may be subject to change per application or orientation.



PROCESSBURNERS.COM

21400 Hoover Road • Warren, Michigan 48089
Phone: 586-756-0950 • Fax: 586-756-2626
sales@drp-co.com • www.processburners.com



DESCRIPTION

- A. Plenum Chamber (Available in 304 SST/430 SST/Aluminized Steel)
- B. Hold Down (304 Stainless Steel)
- C. Emitter Surface (Additional Options Available)
- D. Venturi

NOTE: Burner length is subject to change to meet customer demand but will not exceed 30" long.